

SL LP 62
CAMINO DE GUTIÉRREZ

TYPES AND COLOURS OF MARKERS

	The path continues this way	Variant path	Change of direction	Wrong way
GR				
PR				
SL				

Recommendation

Do not leave the hiking-path and do walk in company. Take a mobile phone with you.

Use equipment that is suitable- especially rain gear in the winter season. Also remember to take enough water with you and something to eat.

Please take all your rubbish with you until you get to a bin, so that only your footprints remain on the path.

Please close all gates you have to open on your route to prevent cattle from escaping, and respect your environment.

In case of difficulty or if you want to make any suggestions, please do not hesitate to give us a call on 922 493 100, or contact us by mail at:

aytopuntagorda@puntagorda.es

Translated by Antje Bleck & Sabine Dörbeck

There is a legend about the coast of Gutierrez, according to which a father and his son once protected the coast from pirates intending to occupy Puntagorda.

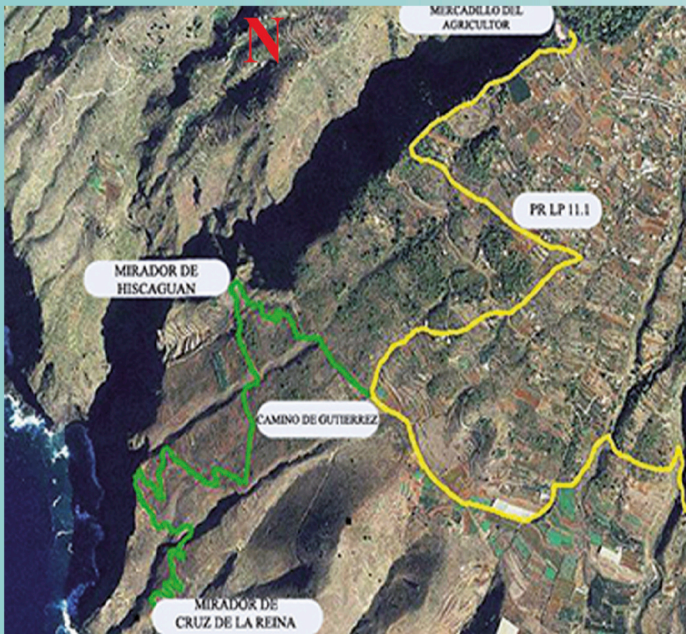
On their escape the pirates left behind a kidnapped queen, but tragically this beautiful woman died of a broken heart a few days later. Poignantly, the father and son gave her back to the ocean, and in order to honour her they built a cross upon a rock overlooking the coast - la Cruz de la Reina.



Ayuntamiento de Puntagorda

www.puntagorda.es





SL LP 62

CAMINO DE GUTIÉRREZ

The Camino de Gutiérrez (SL LP 62) is a hiking path 3,4km long, traversing the northern coast of our district, visiting the Mirador de la Cruz de la Reina and showing us the steep Gutiérrez coast as well as the northwestern coast of La Palma.

This route is an extension of the Camino Mercadillo del Agricultor - Mirador de los Dragos (PR LP 11.1).

On the same level as the Camino de Matos (at km 2,7) we leave the PR LP 11.1 and turn right on to a beaten track that will lead us all the way to the Mirador de la Cruz de la Reina.

During the first kilometre we catch sight of the deep Barranco de Hiscaguán, which separates the two districts of Puntagorda and Garafia.

From here on, the track curves downwards in a zig-zag course along the coast of Puntagorda- through fallow land, untouched nature and the canary pine trees - exposed enough to feel the gusts of the tradewinds.



In twists and turns the path takes us down to the shore, passing old weatherworn stone terraces.

Once again we approach the precipice of the Barranco (gorge) and are now able to see its mouth.

At this spot the path turns in the direction of the next gorge, Barranco de Gutiérrez, follows this smaller barranco and then takes us along its ridge in four curves, straight down to the vantage point where we have a stunning view over the national park (Monumento Natural de la Costa de Hiscaguán) which is delineated by the north-western coast of La Palma.

Finally, we comfortably descend, via steps with banisters, to another smaller vantage point situated on the cliffs.

We spot the beach and the old port – el Puerto de Gutiérrez - most likely called after Cristobal Gutierrez, the first mayor of Tijarafe, Aguatavar and Puntagorda in 1554.

